



# MONTHLY MEMBERSHIP PROGRESS REPORT

District 105 A

Results as of: 12/31/2017

GMT: JOOST PAIJMANS

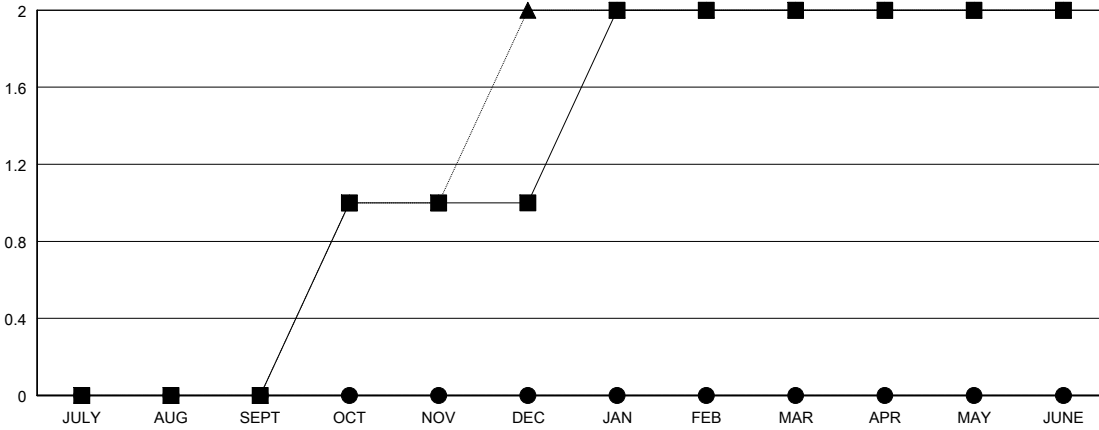
LOCATION ENGLAND

GMT CA

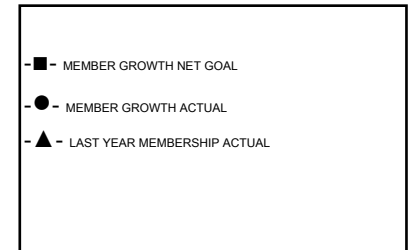
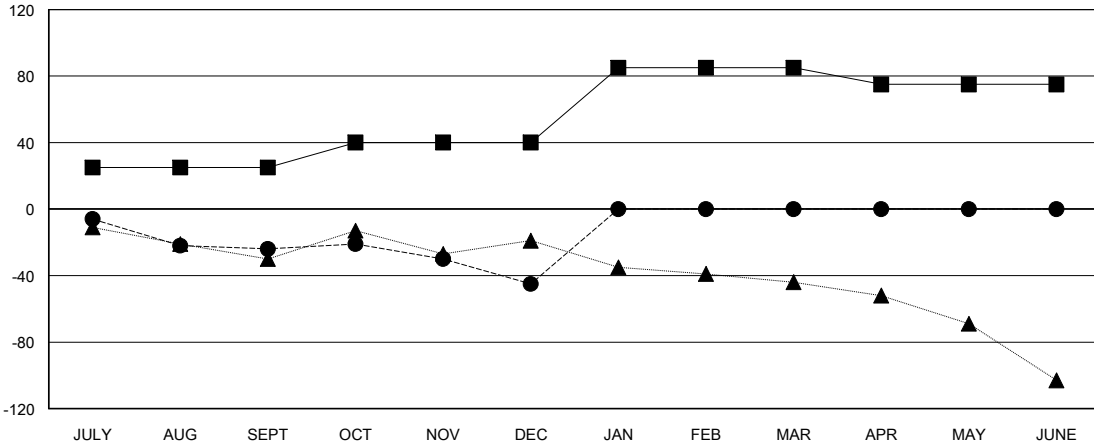
| Clubs                 |               |           |               |
|-----------------------|---------------|-----------|---------------|
| RESULTS FOR 2017-2018 |               |           |               |
| QUARTER               | NEW CLUB GOAL | NEW CLUBS | DROPPED CLUBS |
| JULY/AUG/SEPT         | 0             | 0         | 1             |
| OCT/NOV/DEC           | 1             | 0         | 1             |
| JAN/FEB/MAR           | 1             | 0         | 0             |
| APR/MAY/JUNE          | 0             | 0         | 0             |

| Members               |                        |                      |  |
|-----------------------|------------------------|----------------------|--|
| RESULTS FOR 2017-2018 |                        |                      |  |
| QUARTER               | MEMBER GROWTH NET GOAL | MEMBER GROWTH ACTUAL | DROPPED MEMBERS ACTUAL (including transfers) |
| JULY/AUG/SEPT         | 25                     | 25                   | 48   |
| OCT/NOV/DEC           | 15                     | 22                   | 40   |
| JAN/FEB/MAR           | 45                     | 0                    | 0  |
| APR/MAY/JUNE          | -10                    | 0                    | 0  |

GOALS AND ACTUAL NEW CLUBS CUMULATIVE



GOALS AND ACTUAL MEMBERS CUMULATIVE



|                  |
|------------------|
| DROPPED CLUBS: 2 |
|------------------|

23 CLUBS OF 71 ADDED 1 OR MORE NEW MEMBERS

| GENDER DISTRIBUTION                    |                |
|--|----------------|
| MALE                                   | 1,025 (74.55%) |
| FEMALE                                 | 350 (25.45%)   |
| Women Percentage Fiscal Year Goal: 25% |                |

| DROPPED MEMBERS |           |
|-----------------|-----------|
| DECEASED        | 9         |
| CLUB CANCELLED  | 7         |
| OTHER           | 72        |
| <b>TOTAL</b>    | <b>88</b> |

[CLICK HERE FOR CUMULATIVE MEMBERSHIP DATA](#)

|                                 |     |
|---------------------------------|-----|
| TOTAL FAMILY UNIT MEMBERS       | 101 |
| FAMILY MEMBERS PAYING HALF DUES | 51  |